

Carmelita

Words by Rick Recht
Music by Rick Recht & John Pahmer

Rock (♩ = 108)

Intro

Capo 2: G

C

Em

D

F

C

A

D

F#m

E

G

D



Em

D

G

C

Em

D

F

C

F#m

E

A

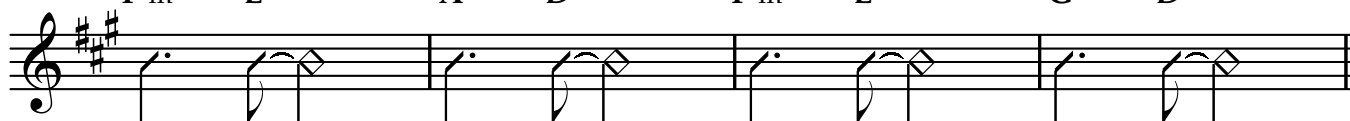
D

F#m

E

G

D



Verse 1

G

C

Em

A

D

F#m



I know a place__ where we can go,__ 'bout

D

E

C

Em

D

E

D

F#m

E



two miles south of a town__ I know, where the blue__

G

C

Em

A

D

F#m



_stream flows__ and the si - lence sings__ and a

D

E

C

G

G/F#

E

D

A

A/G#



starv - ing mind__ finds__ an - y - thing.__

Em F#m C D G A

And ev-ery-where__ you turn,__ there's a ques-tion an-swered.

Dm Em C D

And ev-ery-where__ you turn,__ there's a les-son__

F G Verse 2 G A C D

learned. You don't have to pray_____ for a mir - a -

Em F#m D E C D

cle, you don't have to pay__ an - y - one__ to care.__

Em F#m D E G A C D

The voice you have__ is your ve - hic -

Em F#m Bm7 C#m7 E7 F#7

le_____ to lift you up__ and take you

G/A A/B A B C D

there,__ lift you up__ and take__ you there.__

Chorus

C Cadd² G B_m
 D Dadd² A C[#]_m

Won't you come with me to Car - me - li - ta.

C G D E
 D A

Take a ride to par - a - dise.

A_m B_m B_m C[#]_m F G
 B_m C[#]_m

You've nev - er seen a sweet - er sight than

E_m D C
 F[#]_m E D

Car - me - li - ta. To - geth - er we can find the light.

G C E_m D F C
 A D F[#]_m E G D

Car - me - li - ta. To - geth - er we can find the light.

E_m D G C E_m D F C
 F[#]_m E A D F[#]_m E G D

Car - me - li - ta. To - geth - er we can find the light.

Verse 3

Chords: G A, C D, Em F#m

Come with me, let's find sal - va - tion. You can leave

Chords: D E, C D, Em F#m, D E

your pain and wor - ries be - hind. There's a wise

Chords: G A, C D, Em F#m

old man in Car - me - li - ta. It's in

Chords: D E, C D, G A, G/F# A/G#

your head if you got the time. Hon - ey, I got mine.

Chords: Em F#m, C D

And ev - ery - where you turn, there's voic - es

Chords: G A, Dm Em

call - in'. And ev - ery - where you

Chords: C D, F G

turn, there's a mil - lion stars.

Solo

G C Em D F C 1. Em D 2. G G/F#
 A D F#m E G D F#m E A A/G#

Verse 4

G C Em
 A D F#m

And the road is long— but worth the haul - in', when you

D C Em D
 E D F#m E

find the an - swers 'round the turn._____ If you

G C Em
 A D F#m

lis - ten close,___ you'll___ hear your call - in'._____ When you

Bm7 E7 G/A A C
 C#m7 F#7 A/B B D

o - pen doors,___ you'll nev - er re - turn,___ you might nev - er___ re - turn._____

Final Chorus

C Cadd² G Bm
D Dadd² A C[#]m

Won't you come with me to Car - me - li - ta.

C G D
D A E

Take a ride to par - a - dise.

Am Bm Bm C[#]m F G

You've nev - er seen a sweet - er sight than Car - me - li -

Am Bm Bm C[#]m F G Am Bm Bm C[#]m

- ta. We can find the light.

F G Am Bm Bm C[#]m F G

Car - me - li - ta.

Em D C
F[#]m E D

Car - me - li - ta. To - geth - er we can find the light.

F G G A

-