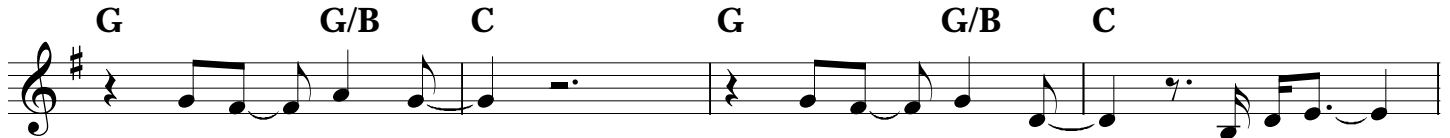


MODER ANI

Music by
Rick Recht
Liturgy

Gently (♩=96)

Intro



Ya lai__ lai lai__

Ya lai__ lai lai__

Ya lai lai__



Ya lai__ lai lai__

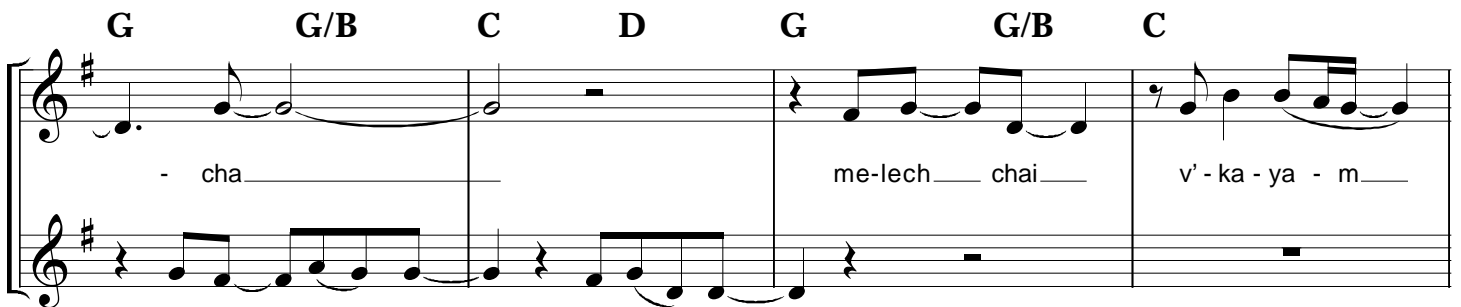
Ya__ lai lai__

Verses 1 & 2



Mo-deh__ a - ni l' - fa - ne - cha__

Mo-deh__ a - ni l' - fa - ne -



me - le - ch chai__ v' - ka - yam__

me-lech__ chai__

v' - ka - ya - m__

G G/B C D G G/B C

she-he-che-zar - ta bi nish' - ma - ti

G G/B C D G G/B C

ra-ba b'-chem-la ra - ba e-mun-a-te - cha

Prechorus

Em D Am C Em D Am C

When I wake, when I rise, when I breathe, when I open my eyes

Em D Am C C

ev-ery da - y I thank G-d for giv - ing me this life

Chorus 1/2

Sing On Second Chorus Only

Chorus 1/2 musical notation. Treble and bass staves. Chords: G, D, G/B, C, G, D, G/B, C. Lyrics: Mo - deh a - ni l' - fa - ne - cha v' - ka -

Mo-deh a - ni l' fa ne - cha me-lech chai v' - ka - yam

Chorus 2 musical notation. Treble and bass staves. Chords: G, D, G/B, C, A, C, D. Lyrics: - yam b' - chem - la When I

she-he-che-zar - ta bi nish'-ma - ti b' - chem - la ra-ba e - mun-a - te

Chorus 3 musical notation. Treble and bass staves. Chords: G, G/B, C, G, G/B, C. Lyrics: - cha

- cha

Coda

Coda musical notation. Treble and bass staves. Chords: G, D, G/B, C, G, D, G/B, C. Lyrics: wake, when I rise, when I breathe, when I o-pen my eyes

Mo-deh a-ni l' fa ne - cha me-lech chai v' - ka - yam

1.

G D G/B C A C D

I give thanks for my life for my life When I

she-he-che-zar - ta bi nish'-ma - ti b' - chem - la ra-ba e - mun a - te - cha

2.

G D G/B C A C D

(eyes) I give thanks

she-he-che-zar - ta bi nish'-ma - ti b' - chem - la ra-ba e - mun-a - te -

Outro

G G/B C G G/B C

- cha

Fade out on repeat

G G/B C G G/B C

Ya lai lai lai Ya lai lai lai Ya lai lai

G G/B C G G/B C

Ya lai lai lai Ya lai lai